

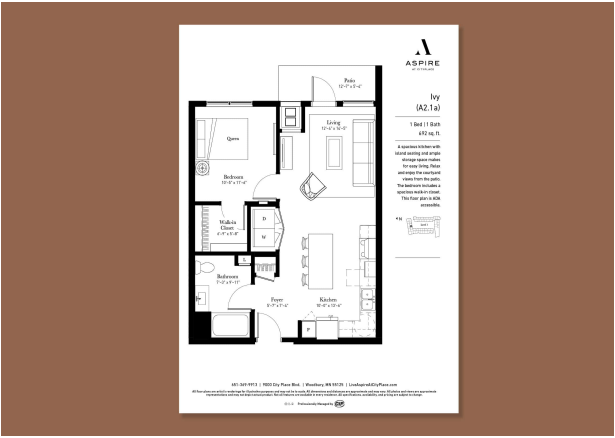
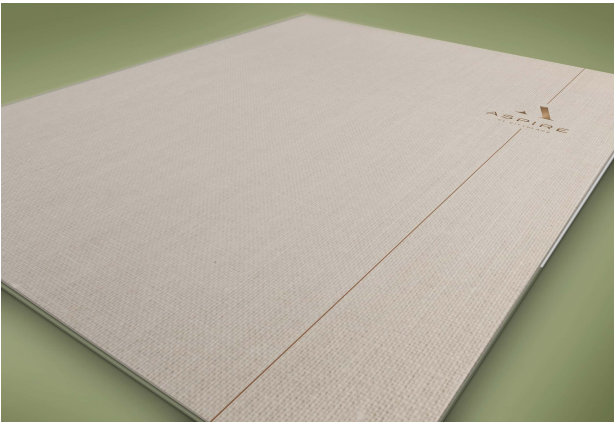
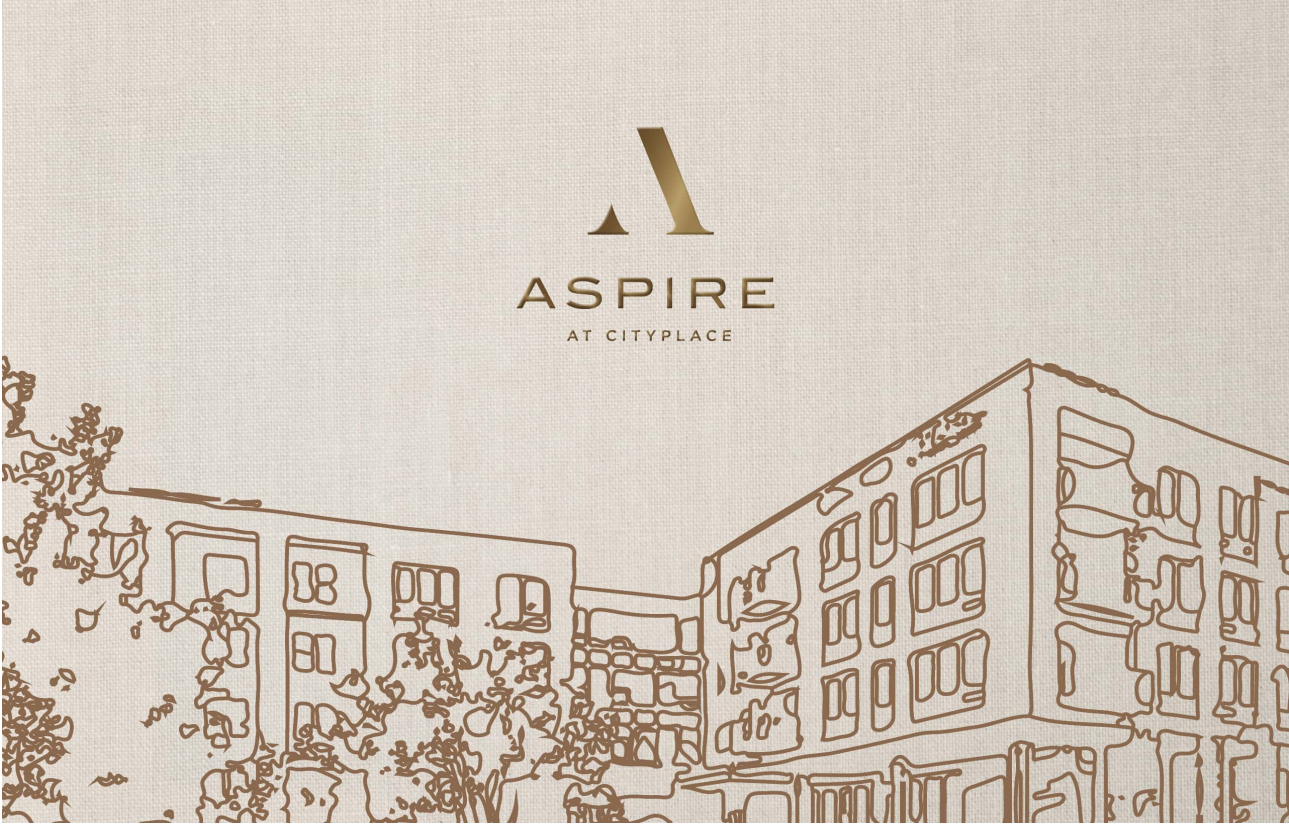
upshift

Aspire At CityPlace
Woodbury, MN

Elevating Aspire at CityPlace through branding and marketing

OBJECTIVE
Aspire at CityPlace is a premium multifamily community in Woodbury, MN, designed to redefine luxury in the suburbs. The project includes a distinctive brand and custom collateral that enhance the building's unique design and resort-like amenities.

SOLUTION
Deliverables featured a fully custom website with API integrations for real-time availability, dynamic contact numbers, and advanced CRM forms, resulting in strengthened branding and marketing. This success fostered repeat projects with Commercial Investment Properties (CIP), emphasizing their commitment to quality across all organizational levels.





A detailed floor plan for the Ivy (A2.1a) unit. The layout includes a Queen bedroom (10'-5" x 11'-6") with a walk-in closet (6'-9" x 5'-8"), a bathroom (7'-3" x 9'-11"), a living area (12'-4" x 14'-5") with a fireplace, a kitchen (10'-0" x 13'-6") with a breakfast bar, a foyer (5'-7" x 7'-4"), and a patio (12'-7" x 5'-4"). The unit is labeled 'Ivy (A2.1a)' and '1 Bed | 1 Bath 692 sq. ft.'.

**Ivy
(A2.1a)**

1 Bed | 1 Bath
692 sq. ft.

A spacious kitchen with island seating and ample storage space makes for easy living. Relax and enjoy the courtyard views from the patio. The bedroom includes a spacious walk-in closet. This floor plan is ADA accessible.

A north arrow pointing up and a small map of the building floor showing the location of Unit 1.

651-369-9913 | 9000 City Place Blvd. | Woodbury, MN 55125 | LiveAspireAtCityPlace.com

All floor plans are artist's renderings for illustrative purposes and may not be to scale. All dimensions and distances are approximate and may vary. All photos and views are approximate representations and may not depict actual product. Not all features are available in every residence. All specifications, availability, and pricing are subject to change.

Professionally Managed by CIP

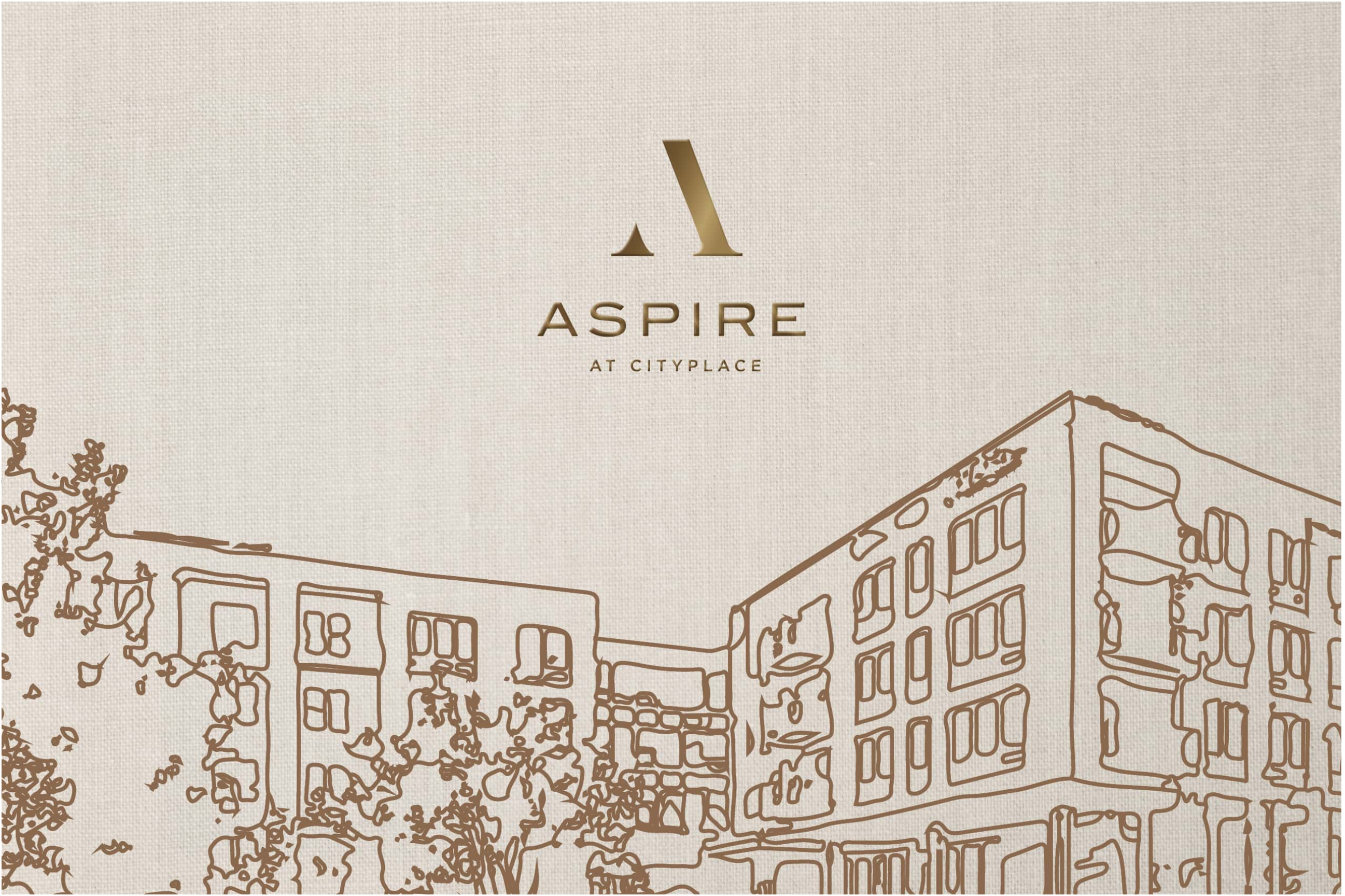


upshift

Aspire At CityPlace

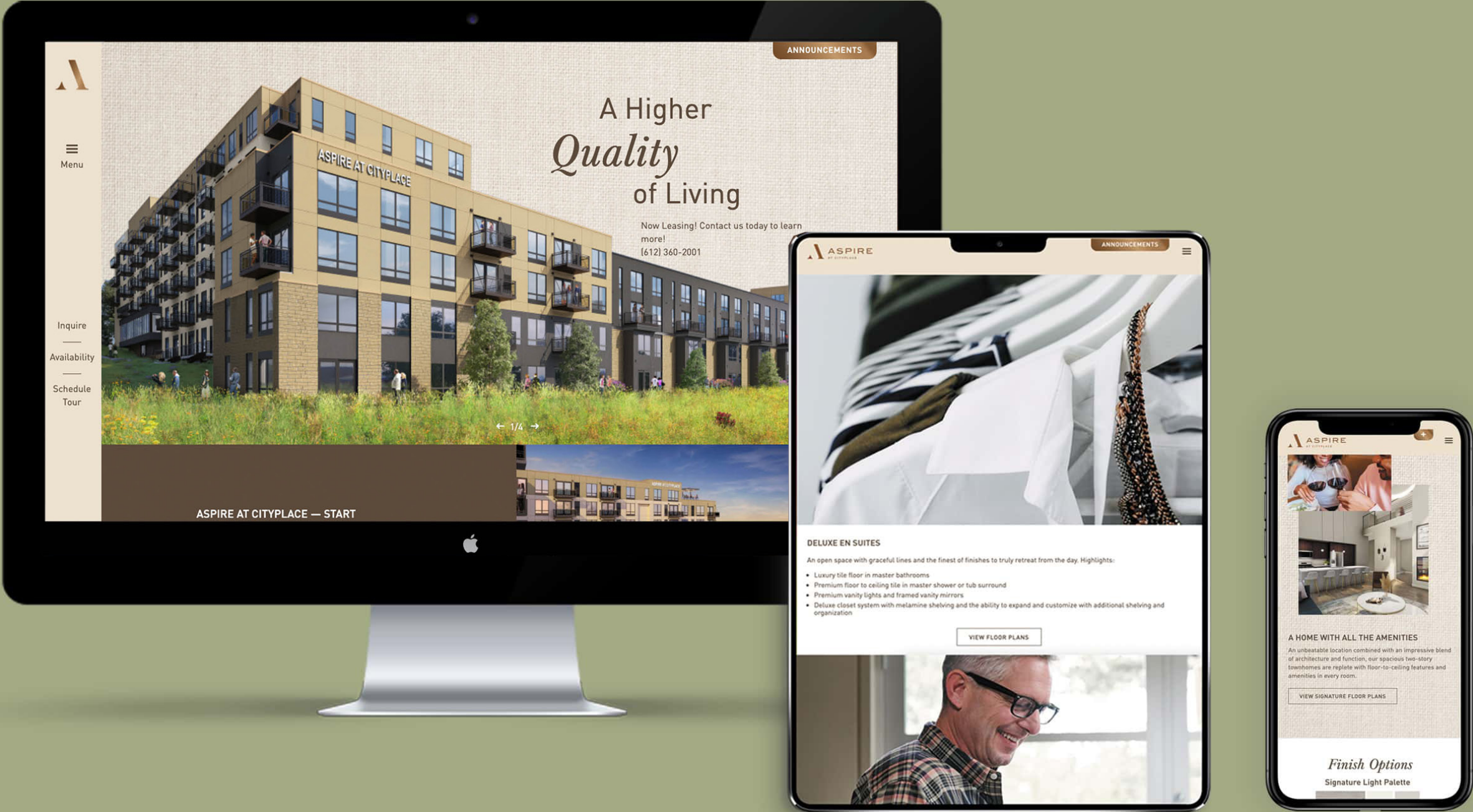
Woodbury, MN

Logo



ASPIRE

AT CITYPLACE



Tailored Spaces for Today

Thoughtful building amenities make all the difference in the greater Twin Cities area.

Aspire at CityPlace's interior spaces are an impeccable blend of design, comfort, and conveniences that are destined to leave you feeling right at home.

- 2-story lobby and expansive common areas with fireplace and coffee bar
- A multi-level, state-of-the-art 24-hour fitness center to enjoy day or night
- Yoga and spin studio with included on-demand fitness classes
- An entertainment suite with full kitchen perfect for hosting guests
- Work from home suites with free WiFi
- Ride-in bicycle storage and maintenance room
- Indoor pet grooming station and multiple dog runs

Learn more about the luxury amenities at LiveAspireAtCityPlace.com



12

Signature Collection

Step Up
to the
*Signature
Collection*

Discover a new level of refinement. Select homes heighten your experience through upgraded finishes, architectural details, and deluxe features.

Signature Collection premium residences are located in their own exclusive building to provide the ultimate in convenience and comfort. Chef-caliber kitchens are equipped with upgraded cabinetry, premium stainless steel appliances, tile backsplashes, and glass-front cabinets*. Other upgrades include spa-like bathrooms, custom closet organizers, premium lighting, and smart home technology to control door locks, a learning thermostat, and other smart devices.

See what makes the Signature Collection special at LiveAspireAtCityPlace.com





Signature Collection Residences Feature:

- Gourmet kitchens with a 5-burner gas range, French-door refrigerator, and upgraded cabinetry
- Deluxe en suites
- Premium finishes
- Smart home technology
- Fireplaces*
- Large walk-out patios*
- 6' showers with dual showerheads*

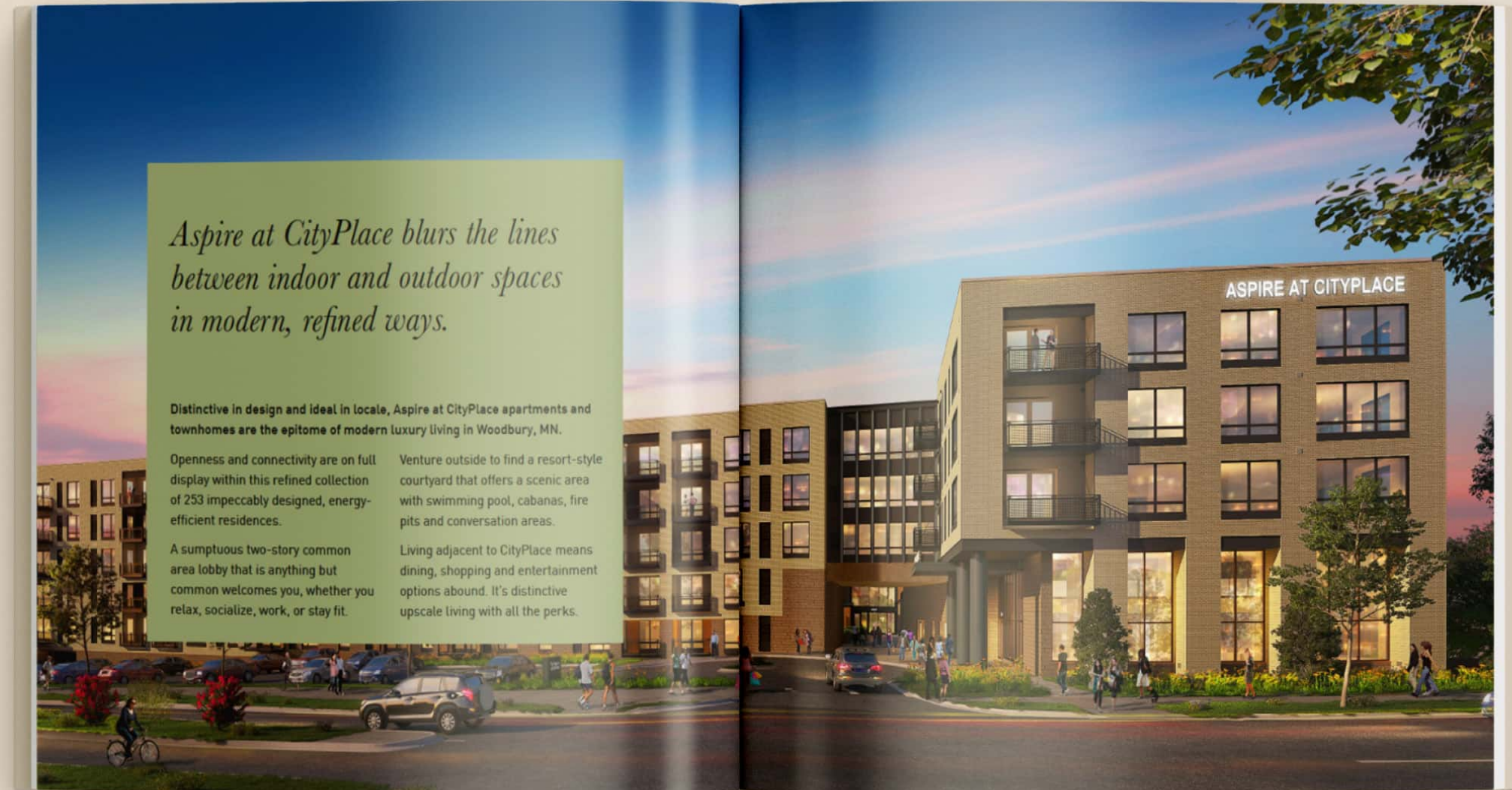
*In select plans

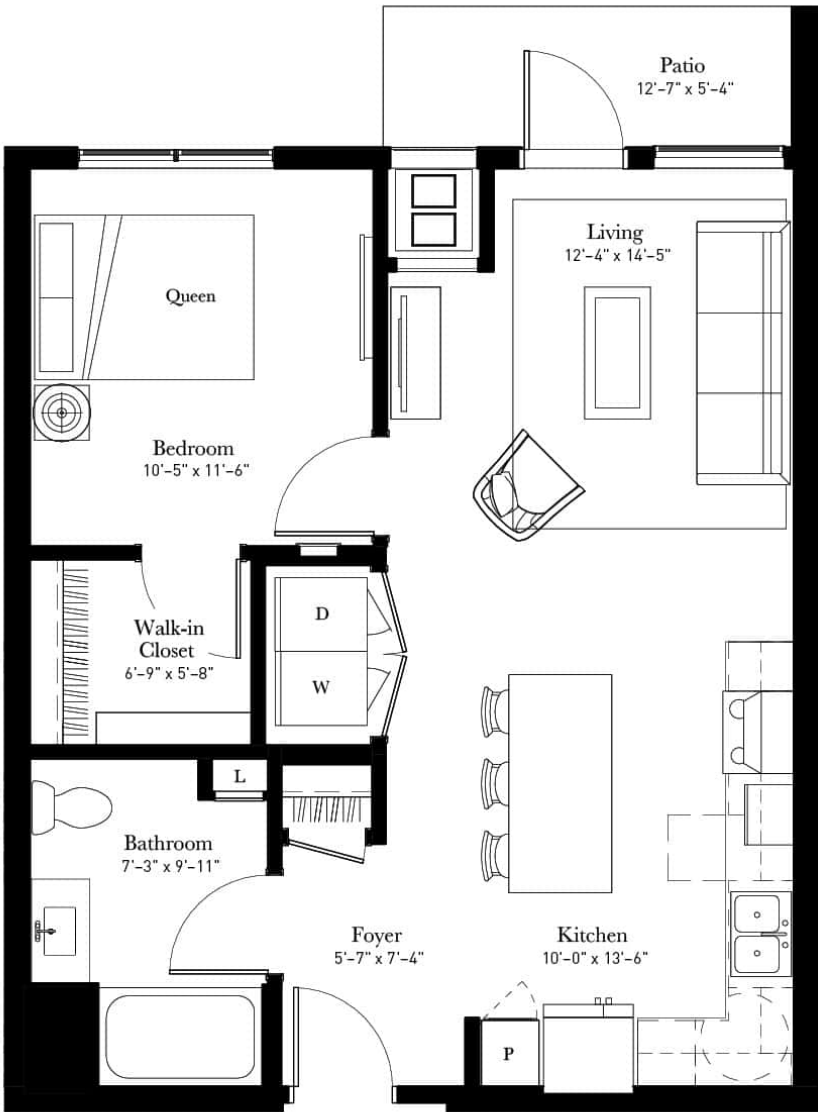
upshift

Aspire At CityPlace

Woodbury, MN

Brochure

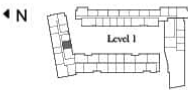




Ivy
(A2.1a)

1 Bed | 1 Bath
692 sq. ft.

A spacious kitchen with island seating and ample storage space makes for easy living. Relax and enjoy the courtyard views from the patio. The bedroom includes a spacious walk-in closet. This floor plan is ADA accessible.



651-369-9913 | 9000 City Place Blvd. | Woodbury, MN 55125 | LiveAspireAtCityPlace.com

All floor plans are artist's renderings for illustrative purposes and may not be to scale. All dimensions and distances are approximate and may vary. All photos and views are approximate representations and may not depict actual product. Not all features are available in every residence. All specifications, availability, and pricing are subject to change.

upshift

Aspire At CityPlace

Woodbury, MN

Folder

